

SITE PLAN

Revised Site Plan
Submittal Date
6-11-21



SEC. 29, T. 19 N., R. 19 E., W.M.

Existing Event
Facility
Barns
&
Access

NOTES:
Wetlands labeled with A and B
numerical flagging.

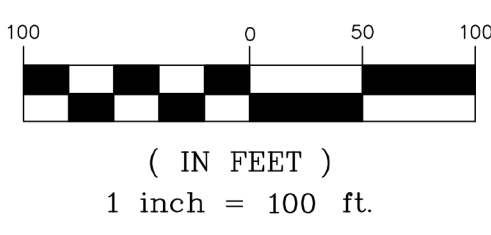
150' Buffer (dotted line) is the
distance from identified
wetlands and Consistent with
Critical Areas Report and
Kittitas County Code.

Naneum Creek labeled with W
numerical flagging.

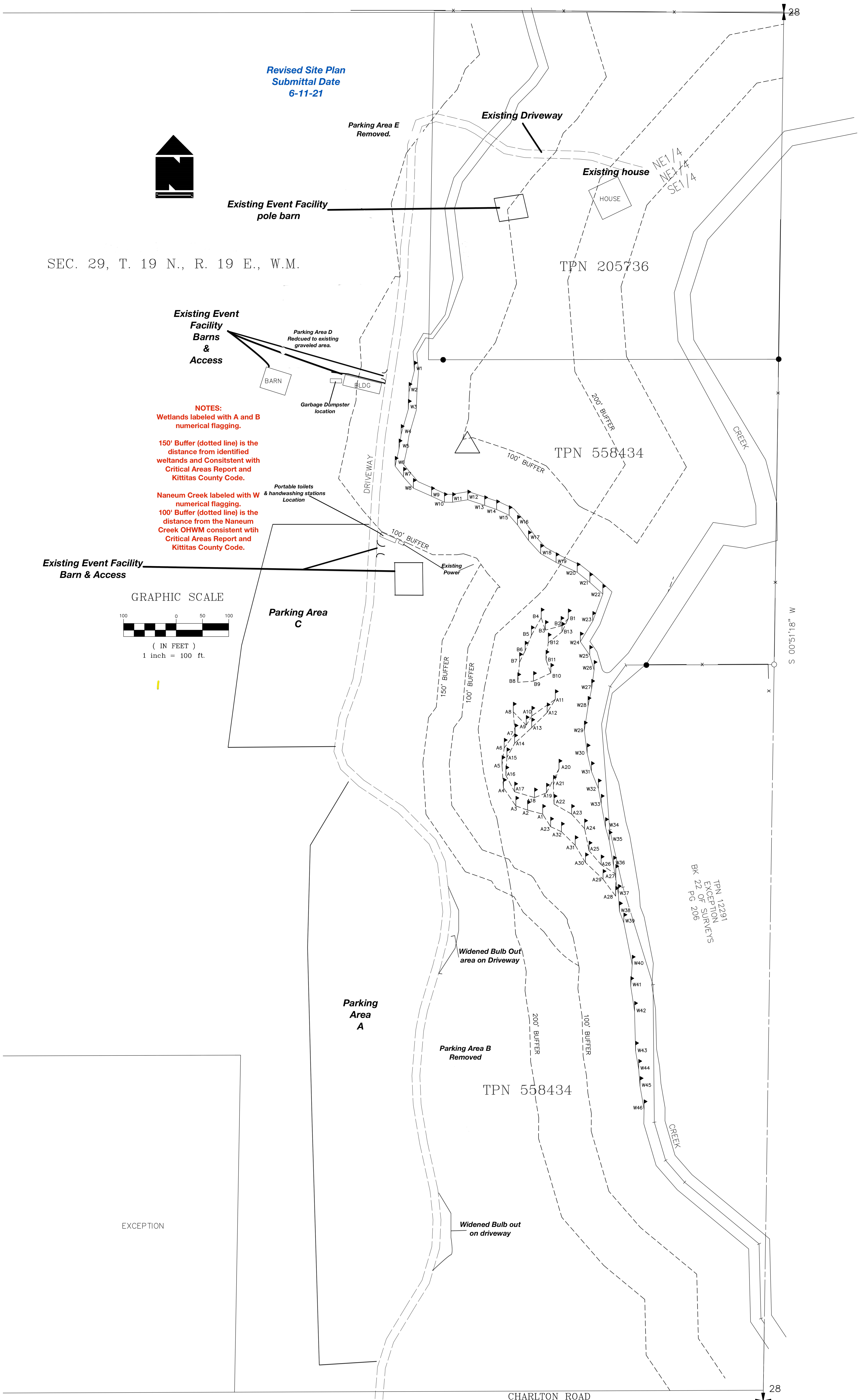
100' Buffer (dotted line) is the
distance from the Naneum
Creek OHWM consistent with
Critical Areas Report and
Kittitas County Code.

Existing Event Facility
Barn & Access

GRAPHIC SCALE



EXCEPTION



TPN 12291
EXCEPTION
SURVEYS
BK 22 OF SURVEYS
PG 206

CHARLTON ROAD

32 33